

# **Bingley Parish** **Neighbourhood Plan**

## **Distinctive Views and Vistas –** **Supporting Evidence**

This page deliberately left blank

# Distinctive Views and Vistas

## Introduction

Bingley is a highly scenic area. The views are not only appreciated by those that live within the plan area, but also those that visit the area and live in the adjoining parishes. A landscape of gently undulating fields and woodlands makes for a fine panorama when viewed from all compass points.

Local landmarks such as Wilsden, Haworth, Otley Chevin and Emley Moor (just outside the Plan area) are impressive and contribute to the area's unique identity and history and the community's sense of place.

The plan area also has a number of high quality vernacular buildings, the views to which are equally impressive and important to the community.

The Neighbourhood Plan Working Group has identified views that are important to the character of the area.

This document outlines the most important views in the Plan area, which the Neighbourhood Plan seeks to acknowledge and protect through Policy NE1: Green Belt.

Photographs kindly provided by Christine Taylor

Ref.	V1
Location	Heights Lane just south of the junction with Otley Road.
Description	Stunning local and distant views west, east and south as far as Emley Moor transmission mast. Westwards from same junction down to East Morton, stunning views over Aire valley to Wilsden, Haworth etc;
Importance	Full stunning views across the whole area. Looking south-west Bingley is nestled in the valley bottom and the view highlights the rural setting of the parish.
Policy	Developments to be sensitively designed to not erode or impinge on the views
	

Ref.	V2
Location	Lay-by in Heights Lane from the junction with Otley Road before Higher Heights Farm
Description	A panorama ranging from NW direction (views up Aire Valley, Wilsden, over Keighley to Haworth and moors) through south (over Bradford to Emley Moor) to east directions with views of Baildon Moor and beyond.
Importance	Full stunning views across the whole area. Looking south-west Bingley is nestled in the valley bottom and the view highlights the rural setting of the parish.
Policy	Developments to be sensitively designed to not erode or impinge on the views.







Ref.	V3
Location	Heights Lane southward opposite Tewitt Lane
Description	The view westwards over Aire valley, towards Wilsden.
Importance	Stunning view across the whole area. The view highlights the rural setting of the parish.
Policy	Developments to be sensitively designed to not erode or impinge on the view



Ref.	V4
Location	100m along Tewitt Lane, Eldwick
Description	The view towards the Southeast over Eldwick.




Importance	Stunning view across the Eldwick area. The view highlights the rural setting of the parish.
Policy	Developments to be sensitively designed to not erode or impinge on the view
	

Ref.	V5
Location	From the front garden of Dick Hudson's Pub, south to The Springs area.
Description	Stunning local and distant views in all compass directions, as far as Otley Chevin to the east.
Importance	Stunning views across the whole area. The view highlights the rural setting of the parish.
Policy	Developments to be sensitively designed to not erode or impinge on the view
	

Ref.	V6
Location	Glovershaw Lane just outside the Parish boundary looking northwards.
Description	Local views north and distant views west, south and east.
Importance	Stunning view across the whole area. The view highlights the rural setting of the parish.



Policy	Developments to be sensitively designed to not erode or impinge on the view
	

Ref.	V7
Location	Sheriff Lane at junction with Woodland Road.
Description	Local and distant stunning views ranging from Baildon Moor in east, through SE and south towards Idle, Bradford (across Aire Valley), and across Bradford (stunning at night with street lights on in city).
Importance	Stunning view across the whole area. The view highlights the rural setting of the parish.
Policy	Developments to be sensitively designed to not erode or impinge on the view
	

Ref.	V8
Location	View of the River Aire and Holme House woods beyond from Airedale Street near Riverside Walk.
Description	The view to the SSW from the Town Square up the Harden Valley with St Ives woodland at close hand to the right is an unusual and attractive view from the centre of a town.
Importance	The view highlights the rural setting of the town and highlights the distinctiveness brought by the River Aire.



Policy	Developments to the right of the river be sensitively designed to not erode or impinge on the view
	

Ref.	V9
Location	Myrtle Park
Description	The surrounding views of open countryside from the bottom of Myrtle Park where the Agricultural Show and Music Festival are held and a 5 minute walk from Main Street provide a stunning backdrop to the Festival in particular.
Importance	The view highlights the rural setting of the town.
Policy	Developments to be sensitively designed to not erode or impinge on the view





Ref.	V10
Location	Gilstead Moor accessed via footpath from Grange Road.
Description	The view over Bingley Town from Gilstead Moor.
Importance	Stunning view across the town. The view highlights the rural setting of the town.
Policy	Developments to be sensitively designed to not erode or impinge on the view



Ref.	V11
Location	Altar Lane at Druid's Altar.
Description	The view over Riddlesden from St Ives Estate, including Druid's Altar.
Importance	Stunning view. The view highlights the rural setting of the parish.
Policy	Developments to be sensitively designed to not erode or impinge on the view.





Ref.	V12
Location	Altar Lane at Druid's Altar.
Description	Another view over Bingley from St Ives Estate, including Druid's Altar.
Importance	Stunning view across the town. The view highlights the rural setting of the parish.
Policy	Developments to be sensitively designed to not erode or impinge on the view.

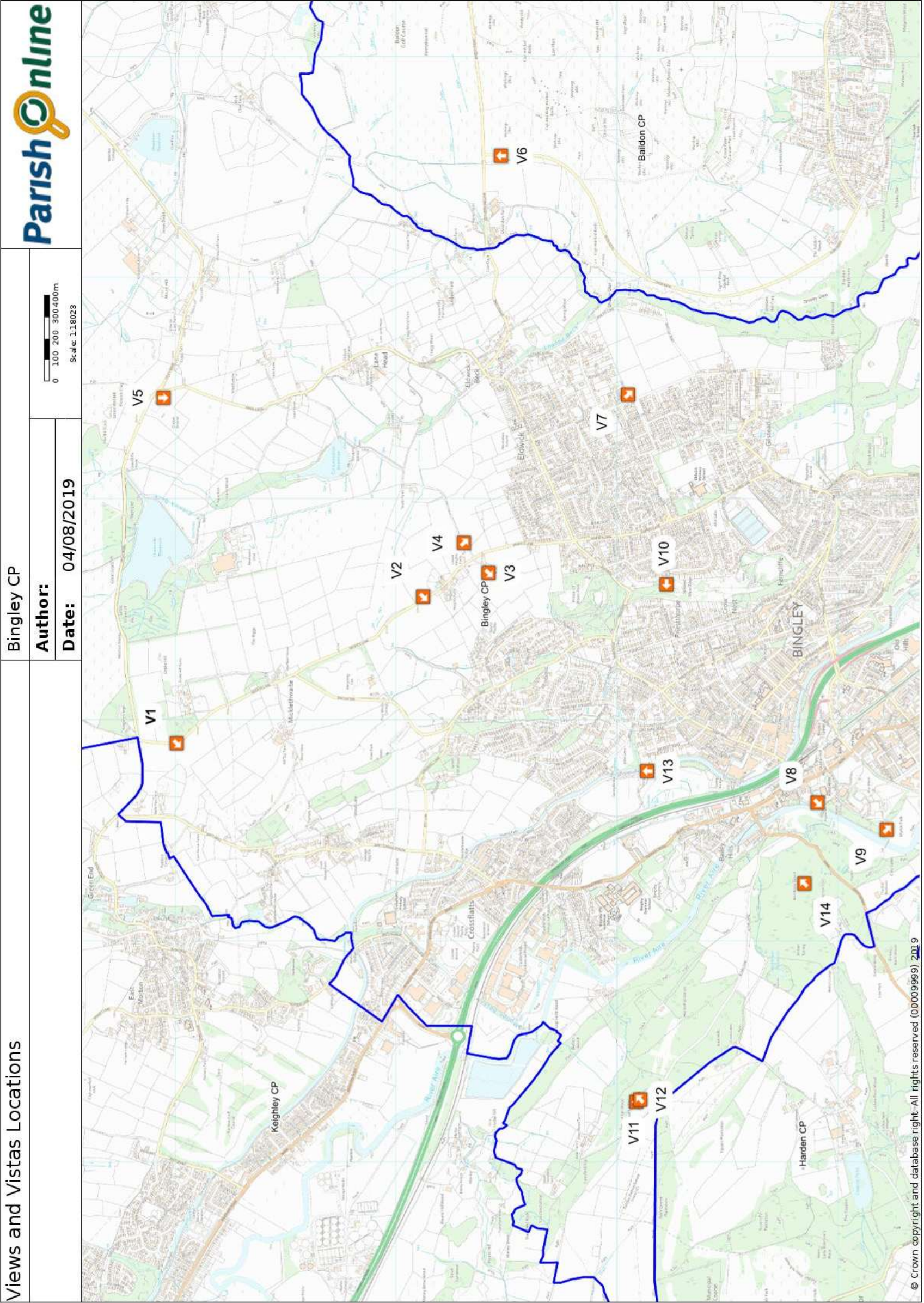




Ref.	V13
Location	Five Rise Locks
Description	Looking west directly up the spectacular staircase of 5 locks at Bingley.
Importance	Locks are a grade 1 listed structure and one of the 7 wonders of the waterways. Preserving their location within a rural setting is essential.
Policy	The lines of trees to both the left and right of the lock flight to be retained to act as a barrier and a setting for the locks. Developments on either side of the locks to be sensitively designed to not erode or impinge on the view.







Locations of Views and Vistas